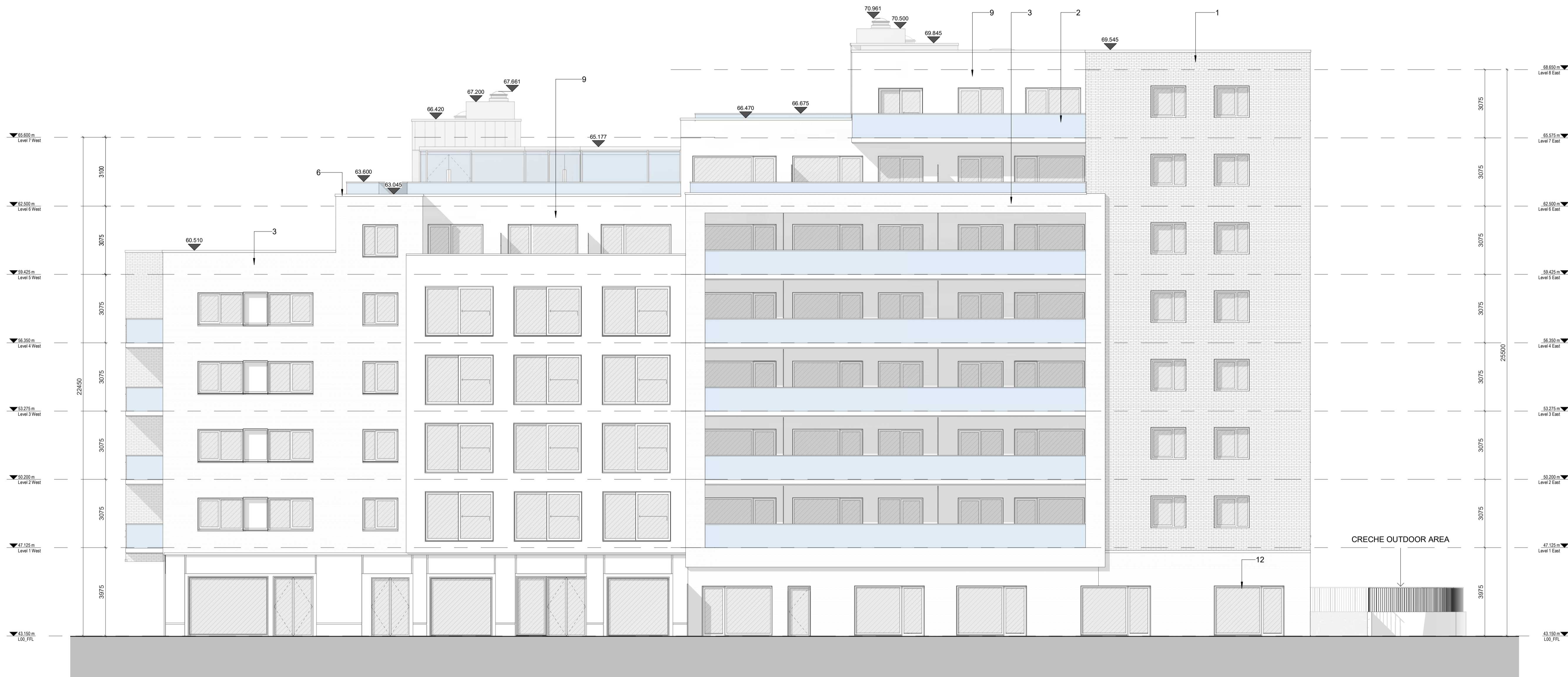
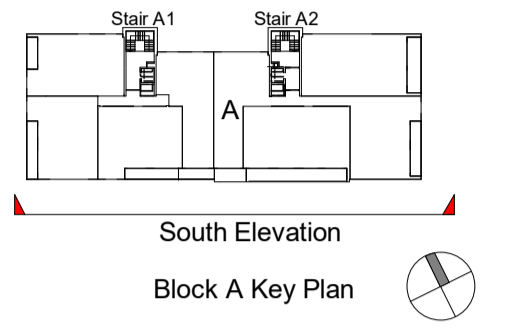


DESIGN INTENT DRAWING



Material Legend

- 1 Oatmeal Brickwork
- 2 Glazed balustrade with power-coated metal handrails
- 3 Grey Brickwork
- 4 Powder Coated Aluminium Double Glazed Curtain Wall
- 5 Zinc Standing Seam Cladding
- 6 Zinc Coated Pressed Metal Coping Detail
- 7 Powder Coated Pressed Metal
- 8 Powder Coated Aluminium Double Glazed Windows
- 9 Render Finishing Off White
- 10 Selected Limestone
- 11 Obscure Back-Painted Glazing
- 12 Charcoal Brickwork

Rev	Description	Date	Dr by	App by

Project Stage: **PLANNING**

Client: Eastwise Construction Swords Limited

Project: Hartfield Place
Swords Road, Whitehall, Dublin 9
D09 C7F8

Drawing Title: BLOCK A - South Elevation GA - 472 Units

Drawn	Checked	Paper Size	Scale	Date
DP	CM	A1	1 : 100 @A1	Mar. 2022

Project No.	Drawing No.	Classification	Revision
HARTPL	012522		

File Name: HARTPL-CWO-BA-ZZ-DR-A-012522

Status: S2-Suitable For Information



No.1 Sarsfield Quay, Dublin 7, D07 R9FH
t: 01 518 0170 e: admin@cwoarchitects.ie
Dublin | Cork | Galway | London | UK & Europe +
www.cwoarchitects.ie

1 GA - South Elevation

1 : 100